

# USER GUIDE

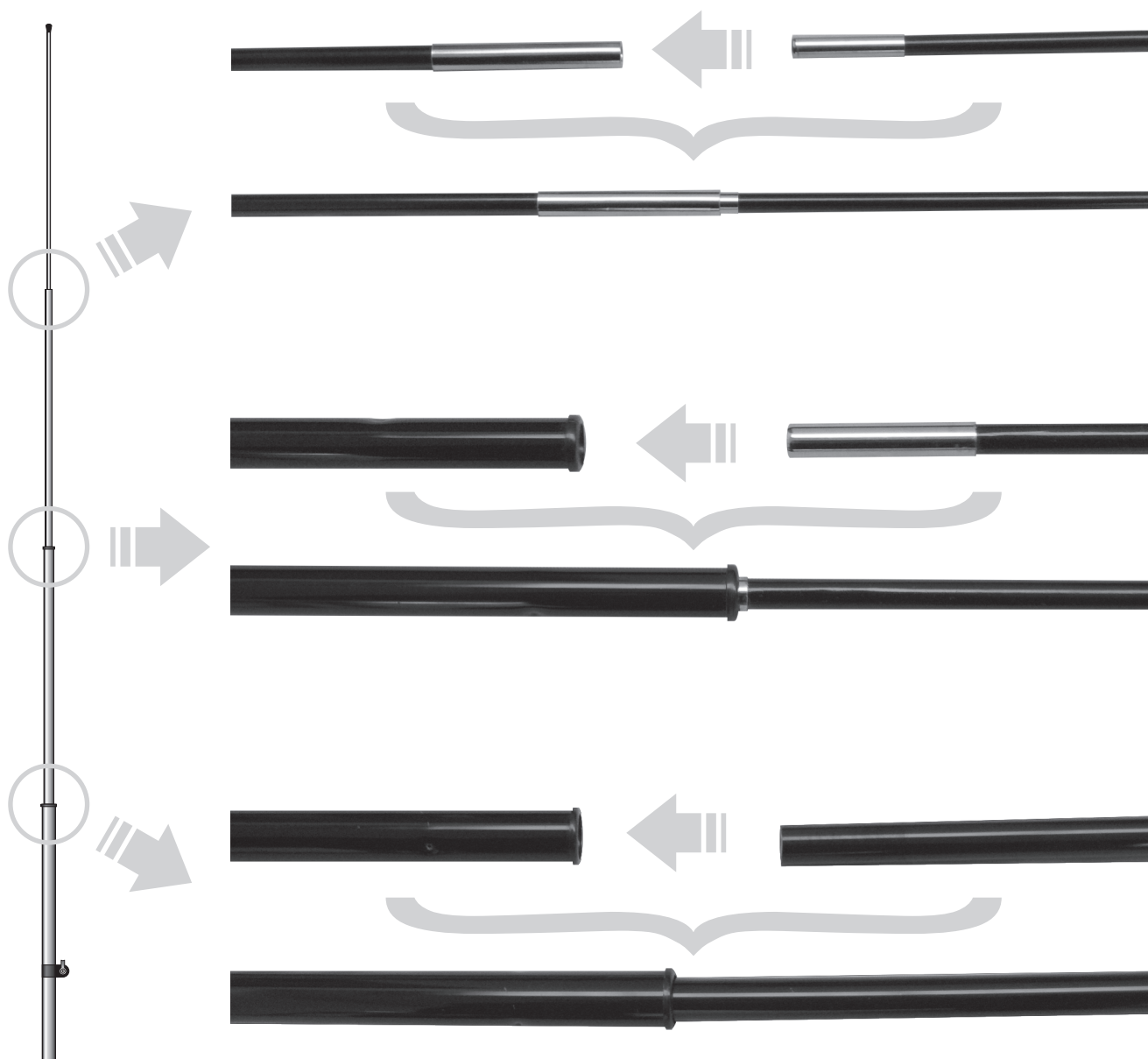
## FLYING FLAG

**RANGE OF SIZES: S – 4 sections, M – 4 sections, L – 5 sections, XL – 5 sections**

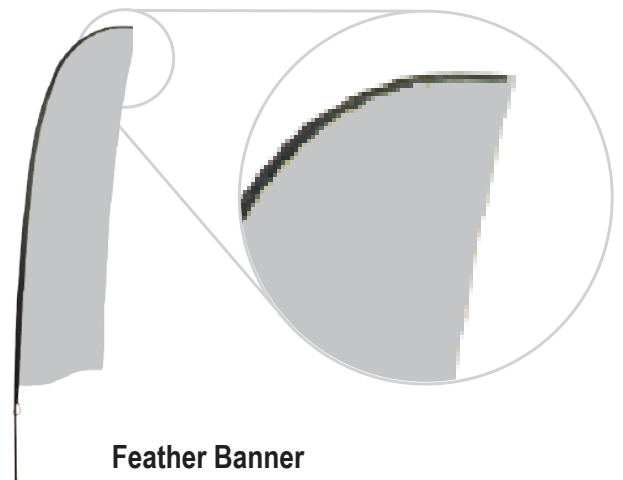
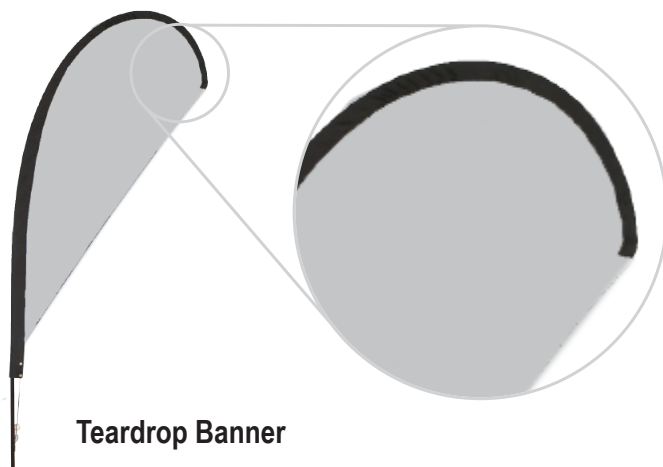
**1. Remove the pole sections and base from the bag.**



**2. Pole by pole, connect the poles by inserting the narrower section into the next pole size up.**



3. Insert the pole (narrowest part first) in to the flag sleeve.



4. Attach the cord to the hook.



5. Put the flying flag onto the base.

