

## TE-28C-PCG1008 (3068x2458(H)mm)

### File:

Please provide final artworks in either Illustrator, Photoshop or CorelDraw file formats  
Files must be set up in CMYK color mode.

All artworks must come with a digital proof saved in jpg format

Should you have specific color requirements, please provide  
PANTONE No. or print sample.

### File setup:

Vector files: 1:1 or proportional to actual size

All fonts must be outlined or converted to curves.

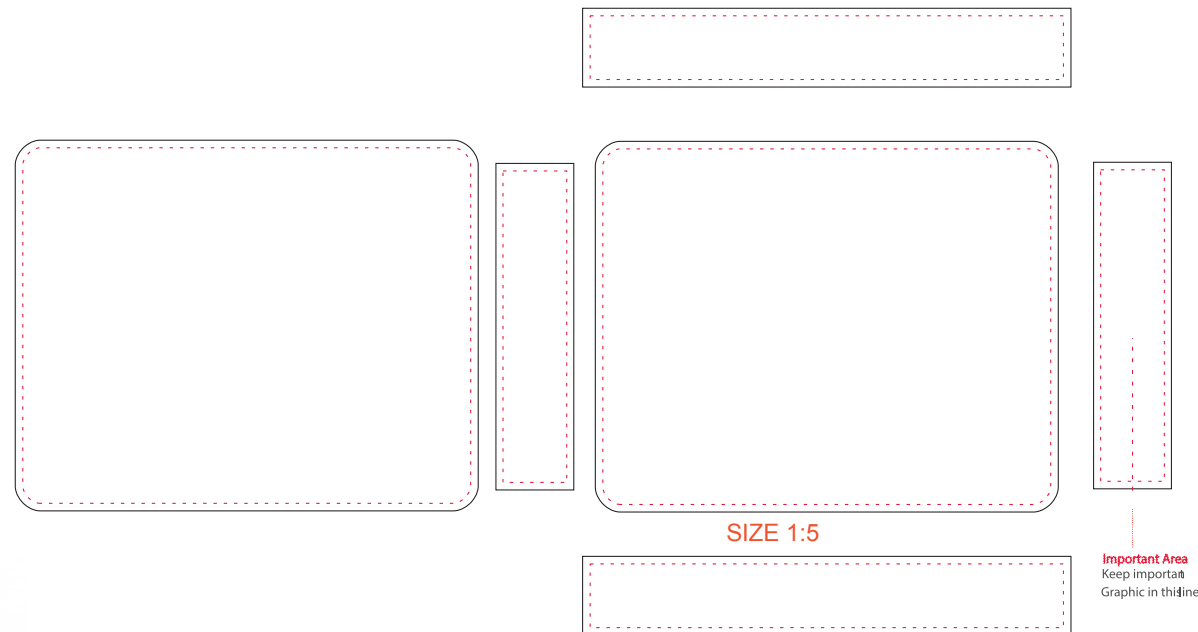
Any image placed in layout should be in CMYK  
mode, in at least 100dpi resolution and must also  
be supplied separately.

## PRODUCT INFORMATION



**Visible Size:3068x2458(H)mm**

## TEMPLATE



**3068x2458mmx2pcs**  
**2166x528mmx2pcs**  
**3236x528mmx2pcs**